

Welcome to

<http://www.keys2yourhouse.com/5300-Lyon-Farm-Drive>

5300 Lyon Farm Drive

in Grandale



At-a-Glance

- 3 Bedrooms
- 2.5 Bathrooms
- Double Decks
- 2-Car Garage
- 2,985 Sq. Ft.

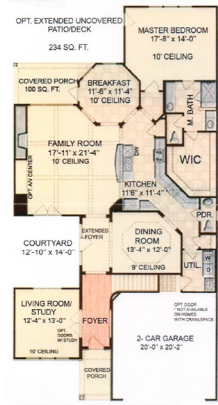
• **\$409,000**



Immaculate move-in ready home on a half-acre private lot in desirable Grandale in South Durham! Enter through the foyer to the open floor plan including the versatile living room or office, family room, and dining room. There is a breakfast nook off the gourmet kitchen with island, granite countertops, gas stove, and stainless steel appliances. Coffered ceiling and fireplace in the living room. Hardwoods and lots of natural light throughout. First floor also includes the master suite with walk-in closet, double vanity, separate tub and standing shower with ample natural light. One of the unique features of this home are the double decks; off the dining room, and another from the living room, both overlooking the private yard. The second floor has an airy spacious loft easily converted to a fourth bedroom, two additional bedrooms, full bathroom, and over 220 square feet of finished additional storage space. Additional list of "custom special features" can be provided on demand.

For more information or personal tour, **call Alexandra Glinkowski at 919-616-2719**, email alexandra@keys2yourhouse.com or go to www.keys2yourhouse.com/5300-Lyon-Farm-Drive

Main Floor Plan



2nd Floor Plan



Photos

Clockwise from top left:

- 1 Living Room or Office with French doors
- 2 Double Vanity in Master Bath
- 3 Dining Room
- 4 Private Yard
- 5 Kitchen with Gas Range and Stainless Steel Appliances
- 6 Loft or Potential 4th Bedroom
- 7 Breakfast Nook
- 8 Master Bedroom



Alexandra Glinkowski
Broker, GRI, CRS, Realtor

EcoBroker

Re/Max United

alexandra@keys2yourhouse.com

<http://www.keys2yourhouse.com>

919-616-2719 direct

